

**6305****NON ROTATING TORQUE METER FOR RATCHET WRENCH**

Non-rotating torque meter meant to be put between the ratchet and the wrench.

Model 6305 - 20 Nm

**Features**

- Broad range of capacities : from 50 Nm to 250 kNm
- Easy to install (standardized wrenches)
- Compact design
- Protection IP 65
- Material: nickel plated steel
- Available options (non exhaustive list):
 - o ATEX intrinsic safety Ex II 1GD Ex ia IIC T6 or T4 Ga Ex ia IIIC T80°C Da
 - o high service temperature (up to 180 °C)
 - o amplified output (V or mA) and digital output signal (RS-232C, RS-485, USB)
 - o double strain-gage bridge

Applications

The SENSY's load cell 6305 is perfectly designed to the following applications :

- Tightening torque control on ratchet wrench
- Tightening torque control on machines

Capacities6305 : 50 - 100 - 300 - 800 Nm
up to 250 kNm

Specifications	0.25	
Combined error	< ± 0.25	% F.S.
Linearity error	< ± 0.25	% F.S.
Repeatability error	< ± 0.1	% F.S.
Creep error over 30 min.	< ± 0.1	% F.S.
Zero shift after loading	< ± 0.025	% F.S.
Reference temperature	23	°C
Nominal temperature range	-10...+45	°C
Service temperature range	-30...+70	°C
Storage temperature range	-50...+85	°C
Temperature coefficient of the sensitivity	< ± 0.05	% F.S./10°C
Temperature coefficient of zero signal	< ± 0.035	% F.S./10°C
Zero balance	± 0.02	mVV
Sensitivity tolerance	< ± 0.3	%
Input resistance	352 ± 2	Ohm
Output resistance	352 ± 2	Ohm
Insulation resistance (50V)	> 5000	Megaohm
Reference excitation voltage	10	VDC
Nominal range of excitation voltage	3..12	VDC
Nominal sensitivity	1.5	mVV
Safe load limit	120	% F.S.
Breaking load	>300	% F.S.
Static lateral force limit	10	% F.S.
Permissible dynamic loading	40	% F.S.

F.S.: full scale - Specifications subject to change without notice

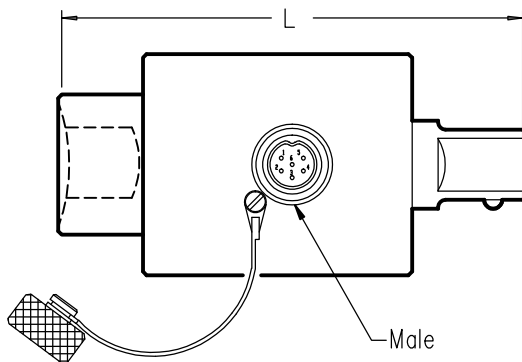
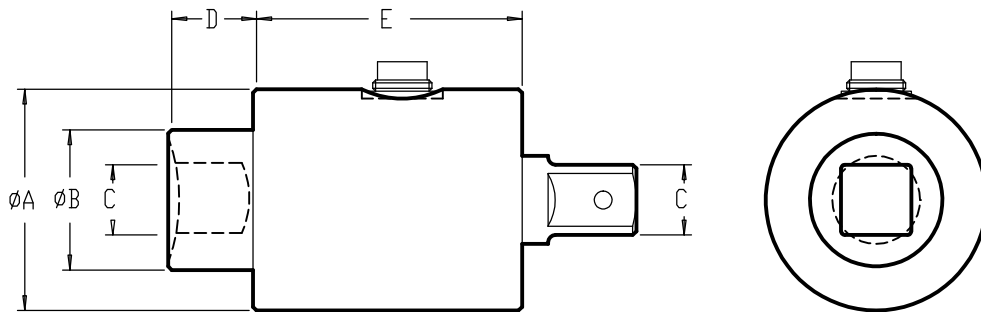
STATIC TORQUEMETER

model 6305 alloy steel
REACTION TORQUE TRANSDUCER

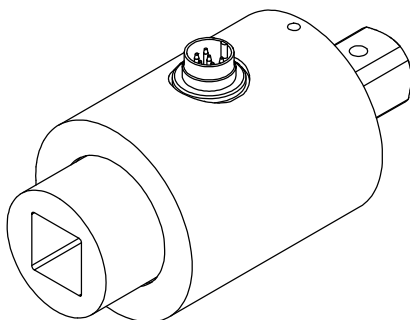
Range 50–800 Nm IP 65
Cable length : 3 m Overload 150 %



ATEX CERTIFIED

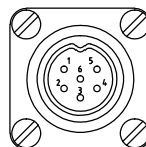


CAPACITIES	ϕA	ϕB	C	D	E	L
50 Nm	45	17.6	3/8"	10	47.5	75 mm
100 Nm	50	25	1/2"	16.5	73	127 mm /5"
300 Nm	60	38	3/4"	22	73	127 mm /5"
800 Nm	65	49	1"	30	100	203 mm /8"



CONNECTOR -CONNECTEUR DIN 45322

CONTACT N° 1 *Yellow* *Jaune* Excitation -
4 *Brown* *Brun* Excitation +



2 *Green* *Vert* :Signal+ :Signal -
3 *White* *Blanc* :Signal- :Signal +
5 *Grey* *Gris* Calibration
6 *Pink* *Rose* Calibration

Standard : Cable screen not connected to transducer
Option f : Cable screen connected to transducer